



The Chemical/Biological (CB) Collective Protection (ColPro) system is designed with the durability and quick set-up of all HDT shelters. The system utilizes filtered air to pressurize the shelters and protect against infiltration of airborne particles and chemical and/or biological agents on the battlefield or in civil incidents. Extensive testing at Edgewood Chemical Biological Center verified that HDT ColPro systems exceed military requirements for protection factors. This set of products utilizes HDT's filtration technology, developed over decades in close collaboration with the military. All HDT ColPro shelter liners easily retrofit into existing HDT frame/outer cover assemblies, enabling current customers to achieve protection with minimal additional gear.

The ColPro system can be configured as a C2 facility, medical (Hospital) facility, R&R, mixed use, or customized for special applications.

KEY FEATURES

- Interoperability with current fielded systems
- Pass-through vestibules with airlock entrances
- Complexes with Hard-Wall shelters and vehicles
- Optional CCA (Contamination Control Area – Decontamination Facility)
- Corrosion-resistant frame and durable multilayer CB resistant fabric
- Equipment successfully passed live-agent and filtration efficiency testing
- Small cube, man-portable, rugged shelter and equipment for use in any terrain
- Integrated monitors/controls for ingress/egress and pressure control

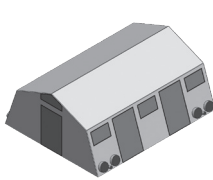
SYSTEM COMPONENTS

- HDT ColPro Shelter, including:
 - HDT outer shelter frame and cover
 - HDT ColPro Liner
 - Flooring, lights and anchoring kit
- HDT ColPro ECU (Environmental Control Unit) with ColPro interface kit
- Airlock entrance (single-person or multi-person)
- FFA400-326 Air Filtration System with M98 Filters
- Optional gear:
 - HDT ColPro Shelter Heater
 - CCA (Contamination Control Area)
 - Negative pressure isolation kit
 - Power generation and distribution equipment
 - Full suite of internal standard and customizable mission oriented equipment including C2 and sanitary facilities

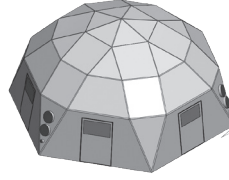


HDT COLPRO SHELTERS

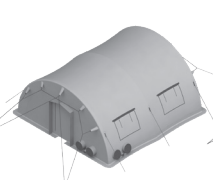
- HDT Base-X® 305, 6D31 Dome and AirBeam® 2021 and 2032 shelters are available, other sizes upon request
- Liner floor anchoring system
- CB liner material tested to US military standards
- Velcro jaw or ITP 2-track seal closures



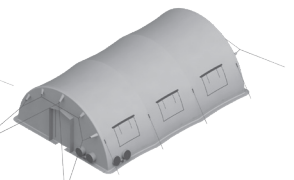
MODEL 305



MODEL 6D31



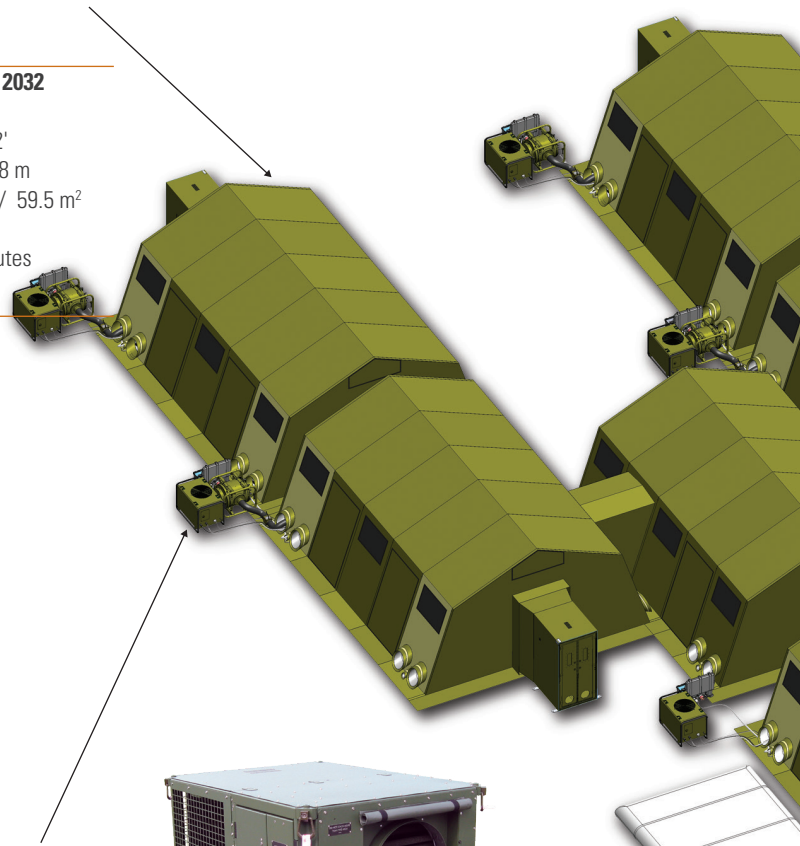
MODEL 2021E



MODEL 2032A

BASE-X SHELTER SPECIFICATIONS

Shelter	Model 305	Model 6D31	Model 2021	Model 2032
Interior dimensions				
Floor space	18' x 25'	27' x 31'	20' x 21.5'	20' x 32'
	5.49 x 7.62 m	8.23 x 9.45 m	6.1 x 6.6 m	6.1 x 9.8 m
Area	450 ft ² / 41.8 m ²	615 ft ² / 57.1 m ²	430 ft ² / 39.9 m ²	640 ft ² / 59.5 m ²
Set-up				
Time	8 – 16 minutes	10 – 20 minutes	10 minutes	10 minutes
Personnel	4 each	6 each	2 each	2 each



COLPRO ENVIRONMENTAL CONTROL UNITS (ECU)

- EEECU-5T with NBC Collar Kit (208 VAC, 60 Hz)
- FDECU-60K with NBC Collar Kit (208 VAC, 50/60 Hz)
- 6 Ton Basic ColPro (208 VAC, 60 Hz)
- EEECU-M18-1SEL with NBC Collar kit (400 VAC, 50 Hz)
- EEECU-M18-2 BASIC with NBC Collar kit (400 VAC, 50 Hz)



ECU SPECIFICATIONS

	6-Ton ColPro	EEECU-M18-1 SEL	EEECU-M18-2 BASIC	EECU-5 Ton (60K)	FDECU- 60K
Physical characteristics					
L x W x H	41.875" x 51.875" x 24"	47.38" x 35.75" x 45.75"	45.75" x 35.75" x 47.38"	45.75" x 35.75" x 47.38"	51.94" x 41.88" x 31.81"
	106 x 132 x 61 cm	120 x 91 x 116 cm	116 x 91 x 120 cm	116 x 91 x 120 cm	132 x 106 x 81 cm
Weight	540 lbs / 245 kg	576 lbs / 261 kg	540 lbs / 245 kg	670 lbs / 304 kg	700 lbs / 318 kg
Power requirements	208VAC, 3PH, 60HZ	400VAC, 3PH, 50 Hz	400VAC, 3PH, 50Hz	208 VAC, 50/60 Hz	208/230 VAC, 3PH, 50/60 Hz
ECU output					
Cooling	72,000 BTU/H 21 kW	63,000 BTU/H 18 kW	63,000 BTU/H 18 kW	60,000 BTU/H 17.6 kW	55,000 – 67, 000 BTU/H 516.1 – 19.6 kw/h
Heating	40,000 BTU/H 12 kW	37,554 BTU/H 11 kW	38,236 BTU/H 11 kW	37,000 BTU/H 10.8 kW	36,000 – 75,000 BTU/H 10.6 – 22.0 kw/h

For more information about any of these products, please contact your HDT Global representative.



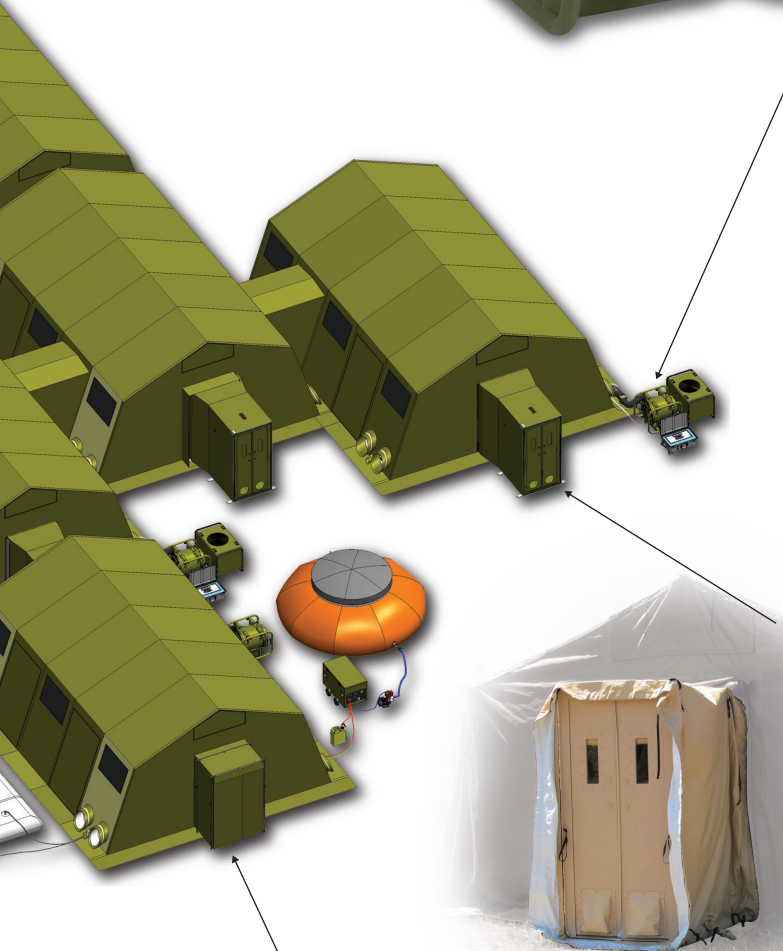
FFA400-326 FILTRATION SYSTEM

- 60% the shipping cube and weight of existing CBRN filtration units
- All weather, man portable, stackable
- MIL-PRF-32350, MIL-STD-810, MIL-STD-461, AEP54
- Multi voltage operation (190-240 VAC, 50-60Hz, 1, 2, 3 Phase)
- M98 filter set, per MIL-PRF-51527, STANAG4447, AEP54
- Separate HEPA/GAS cartridges
- True High-Efficiency Particulate Arrestor (HEPA)
- High Efficiency Gas Adsorber, CWA and TIC's
- 400 CFM (680 m³/h) constant airflow capacity with centrifugal dust separator

FFA400-326 SPECIFICATIONS

Rated air flow	400 CFM	680 m ³ /h
System air flow resistance	9 IWG est.	2250 Pa
Physical characteristics		
L x W x H	37" x 31" x 30"	94 x 79 x 76 cm
Weight*	179 lbs	81 kg
Filter (sold separately)	M98, Gas and Particulate, Filter Set, 200 CFM	
Power requirements		
Hz	50/60	
VAC	190-240 (1, 2, or 3 phases)	
Watts	2200	

* Excludes weight of filter.



AIRLOCK ENTRANCES

- Meets U.S. military requirements
- 3 Log purge time ~ 3 minutes (Single Person Entrance - SPE) / ~ 5 minutes (Multiple Person Entrance - MPE)
- Bump-through entrance doors
- Optional recirculation filter unit to decrease purge time through airlock
- Integrates with all HDT CB shelter products
- Analog manual controls or digital automated controls

AIRLOCK SPECIFICATIONS

	SPE	MPE1 Frame	MPE2 Liner
Physical characteristics			
L x W x H	29" x 35" x 84"	120" x 114" x 96"	120" x 114" x 96"
Weight	73.7 x 88.9 x 213 cm	305 x 290 x 244 cm	305 x 290 x 244 cm
Purge time	190 lbs / 86.2 kg	160 lbs / 72.6 kg	215 lbs / 97.5 kg
Setup	2 minutes	9.5 minutes**	9.5 minutes**
Time	10 minutes	10 minutes	
Personnel	1	2	

** 4.25 minutes with recirculation FFA400-326

NON-EXPORT CONTROLLED INFORMATION

CONTAMINATION CONTROL AREA (CCA)

- 3 lanes for ambulatory decontamination
- Convertible to 2 lanes, ambulatory and non-ambulatory
- Interfaces with shelter airlock for smooth and safe transition into TFA while maintaining protection
- Water distribution (showers and hand wands), berm, berm floor and partitions included
- Based on HDT 305 ColPro Shelter (above), other sizes to match complex upon request
- ECU and Filtration system for purging available (recommended)
- Water supply tank, pumps and combustion heater and collection available
- System can interface with customer water supply and collection
- Lighting and blackout equipment available

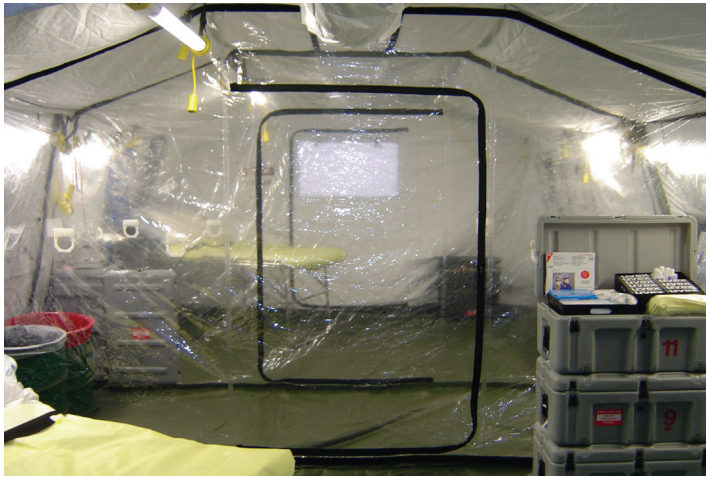
DECONTAMINATION SHELTER SYSTEMS

- User-friendly, advanced frame guarantees quick set up and superior strength
- Designed with wide lanes for rapid decon
- Water filled sidewall berm anchors shelter
- Modular design adapts to changing situations
- Completely integrated liner system includes containment berm, plumbing and lane dividers
- Folding frame technology makes set-up quick and easy



DECON SHELTER SPECIFICATIONS

Shelter	Individual 102	Two Lane 203	Three Lane 303	8 Foot Conveyor	17 Foot Conveyor
Interior dimensions					
Floor space	6' x 10' 1.8 x 3.0 m	11' x 15' 3.4 x 4.6 m	15' x 15' 4.6 x 4.6 m	8' x 2' 2.4 x 0.6 m	17' x 2' 5.2 x 0.6 m
Area	60 ft ² / 5.6 m ²	165 ft ² / 15.6 m ²	225 ft ² / 21.2 m ²		
Set-up					
Time	3 to 4 minutes	5 to 8 minutes	5 to 8 minutes	1 minutes	1 minutes
Personnel	2	2	4	2	2
Accessories	Water heater, solution proportioner or solution eductor, sump pump kit, water pump, hoses, extension cords, water manifold kit, lighting, and air pump. Non-Ambulatory Systems include conveyor and transfer board.				



MEDICAL ISOLATION KIT

- 6-Bed, Rapid Deploying shelters with the most advanced negative pressure filtration technologies to prevent the spread of airborne infectious diseases
- Includes an ante-room area
- Free-standing, expeditionary, complete with power and cooling
- Medical equipment/supplies included can be tailored to meet your specific requirements
- Beds included with system

HDT Expeditionary Systems, Inc.
 30500 Aurora Road, Suite 100
 Solon, OH 44139 USA
 P 800.969.8527 / 216.HDT.6111
 sales@hdtglobal.com



IASH II

- Remote thermostat for temperature control
- 200 VAC outlets for the HDT FFA-400 filtration system
- Compatible with 400 CFM CBRN filtration system

MTH200CB SPECIFICATIONS

Rating (variable)	100,000 – 200,000 BTU/H	29.8 – 58.6kW
Air flow	1900 CFM	53.8 m ³ /h
Fuel	DF1, DF2, DFA, and JP8	
Tank capacity	22 gallons	83.3 liters
Consumption	1.75 gallons per hour max	
Power	110 VAC, 60 Hz, 15 Amp	
Physical characteristics		
L x W x H	58" x 23" x 28"	147.3 x 58.4 x 71.1 cm
Weight (dry weight)	272 lbs	123.4 kg
Accessories		
Included	Remote thermostat and CO detector, stack adapter, two 16" x 10' (40.64 cm x 3 m) ducts, power cord	
Available	Insulated ducts, ColPro collars and ducts	

NON-EXPORT CONTROLLED INFORMATION