

COLPRO SYSTEMS

Complete Expeditionary Protection



The Chemical/Biological (CB) Collective Protection (ColPro) system is designed with the durability and quick set-up of all HDT shelters. The system utilizes filtered air to pressurize the shelters and protect against infiltration of airborne particles and chemical and/or biological agents on the battlefield or in civil incidents. Extensive testing at Edgewood Chemical Biological Center verified that HDT ColPro systems exceed military requirements for protection factors. This set of products

utilizes HDT's filtration technology, developed over decades in close collaboration with the military. All HDT ColPro shelter liners easily retrofit into existing HDT frame/outer cover assemblies, enabling current customers to achieve protection with minimal additional gear.

The ColPro system can be configured as a C2 facility, medical (Hospital) facility, R&R, mixed use, or customized for special applications.

KEY FEATURES

- Interoperability with current fielded systems
- Pass-through vestibules with airlock entrances
- Complexes with Hard-Wall shelters and vehicles
- Optional CCA (Contamination Control Area – Decontamination Facility)
- Corrosion-resistant frame and durable multilayer CB resistant fabric
- Equipment successfully passed live-agent and filtration efficiency testing
- Small cube, man-portable, rugged shelter and equipment for use in any terrain
- Integrated monitors/controls for ingress/egress and pressure control

SYSTEM COMPONENTS

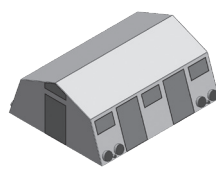
- HDT ColPro Shelter, including:
 - HDT outer shelter frame and cover
 - HDT ColPro Liner
 - Flooring, lights and anchoring kit
- HDT ColPro ECU (Environmental Control Unit) with ColPro interface kit
- Airlock entrance (single-person or multi-person)
- FFA400-326 Air Filtration System with M98 Filters
- Optional gear:
 - HDT ColPro Shelter Heater
 - CCA (Contamination Control Area)
 - Negative pressure isolation kit
 - Power generation and distribution equipment
 - Full suite of internal standard and customizable mission oriented equipment including C2 and sanitary facilities

COLPRO SYSTEMS

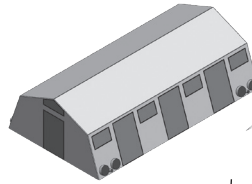
Complete Expeditionary Protection

HDT COLPRO SHELTERS

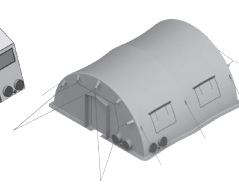
- HDT Base-X® 305, 307, and AirBeam® 2021 and 2032 shelters are available, other sizes upon request
- Liner floor anchoring system
- CB liner material tested to US military standards
- Liner LM200 US Military approved material
- YKK Zipper (sealed zipper)



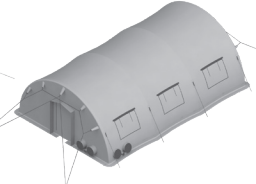
MODEL 305



MODEL 307



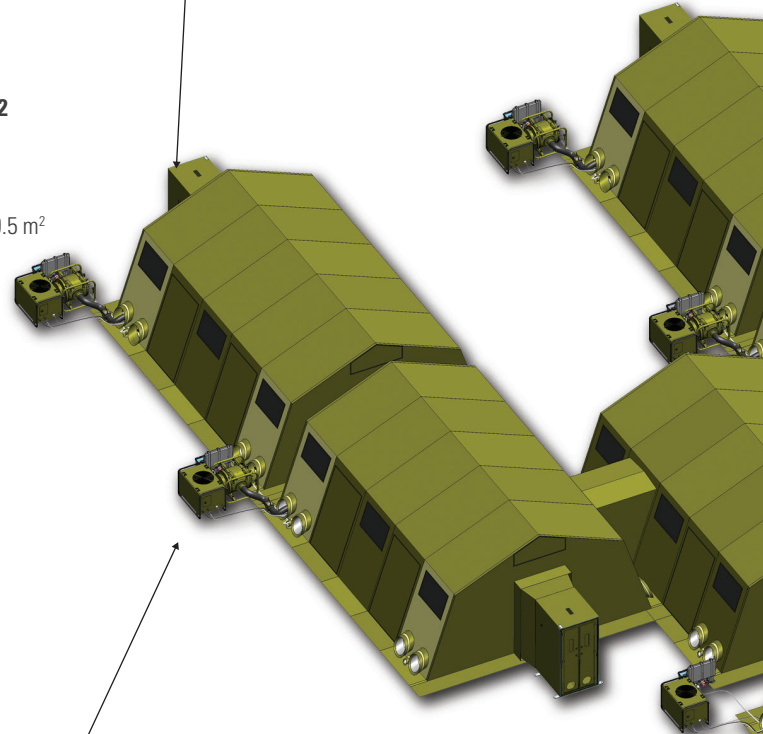
MODEL 2021



MODEL 2032

BASE-X SHELTER SPECIFICATIONS

Shelter	Model 305	Model 307	Model 2021	Model 2032
Dimensions				
Floor space	18' x 25' 5.49 x 7.62 m	18' x 35' 5.49 x 10.67 m	20' x 21.5' 6.1 x 6.6 m	20' x 32' 6.1 x 9.8 m
Area	450 ft ² / 41.8 m ²	630 ft ² / 58.6 m ²	430 ft ² / 39.9 m ²	640 ft ² / 59.5 m ²
Set-up				
Time	8 – 16 minutes	16 minutes	10 minutes	10 minutes
Personnel	4 each	6 each	2 each	2 each



COLPRO ENVIRONMENTAL CONTROL UNITS (ECU)

- EEECU-M18 with NBC Collar Kit (208 VAC, 60 Hz)
- EEECU-60K with NBC Collar Kit (208 VAC, 60 Hz)
- EEECU-6T with NBC Collar Kit (208 VAC, 60 Hz)
- *FDECU-60K with NBC Collar Kit (208 VAC, 50/60 Hz)

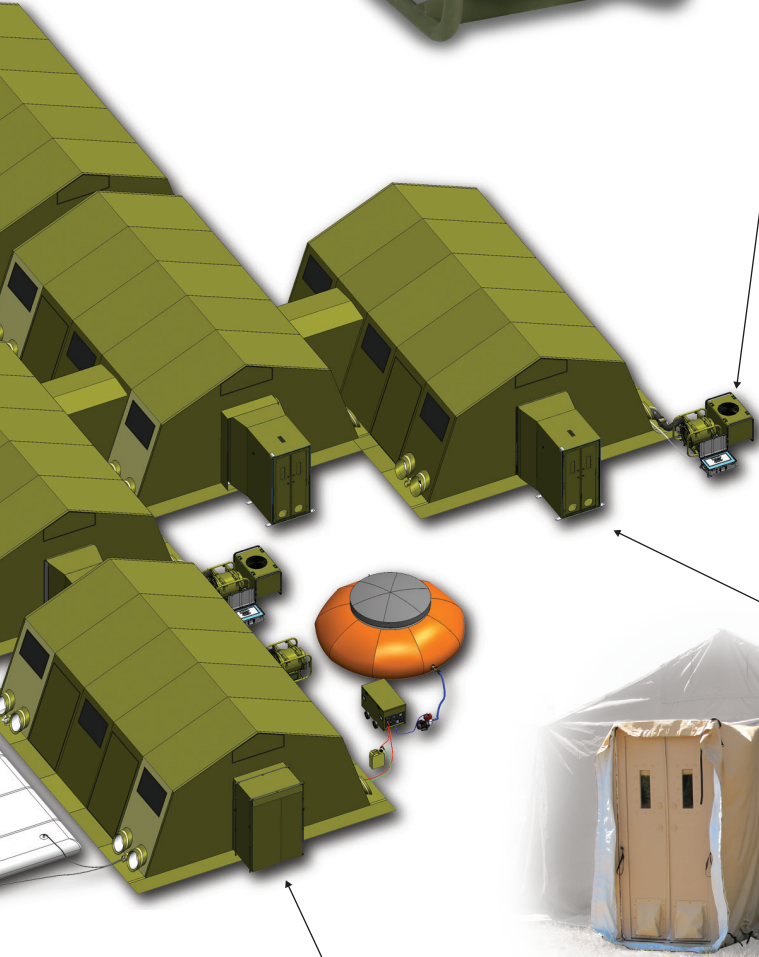
**compatible but not available for purchase*



ECU SPECIFICATIONS

	EEECU-M18	EEECU-60K	EECU-6 Ton
Physical characteristics			
L x W x H	45.75" x 35.75" x 47.38" 116 x 91 x 120 cm	45.75" x 35.75" x 47.38" 116 x 91 x 120 cm	41.88" x 51.88" x 24" 106 x 132 x 61 cm
Weight	540 lbs / 245 kg	640 lbs / 290 kg	540 lbs / 245 kg
Power requirements	400VAC, 3PH, 50HZ	208VAC, 3PH, 50-60Hz	15kW, 208VAC, 60Hz
ECU output			
Cooling	61,416 BTU/H 18 kW	60,100 BTU/H 17.6 kW	72,000 BTU/H 21.1 kW
Heating	38,000 BTU/H 11.1 kW	37,000 BTU/H 10.8 kW	40,000 BTU/H 11.7 kW

For more information about any of these products, please contact your HDT Global representative.



FFA400-326 FILTRATION SYSTEM

- All weather, man portable, stackable
- 400 CFM (680 m³/h) constant airflow capacity with centrifugal dust separator
- Handheld remote control with visual indicators, standard
- Hanging remote with low pressure alarm (LPA) and detectors interface is available.
- MIL-PRF-32350, MIL-STD-810, MIL-STD-461, AEP-54
- Multi voltage operation (190-240 VAC, 50-60Hz, 1, 3 Phase)
- Specific international power unit available (240 VAC, 50 Hz, 1 phase)
- M98 filter set, per MIL-PRF-51527/STANAG4447
- M98-E per AEP-54 available
- M98-P Peacetime / training filter available
- Detailed filters information see M98 filter datasheet

FFA400-326 SPECIFICATIONS

Rated air flow	400 CFM	680 m ³ /h
System air flow resistance	9 IWG est.	2250 Pa
Physical characteristics		
L x W x H	37" x 31" x 30"	94 x 79 x 76 cm
Weight*	179 lbs	81 kg
Filter (sold separately)	M98, Gas and Particulate, Filter Set, 200 CFM	
Power requirements		
Hz	50/60	
VAC	190-240 (1, 2, or 3 phases)	
Watts	2200	

* Excludes weight of filter

AIRLOCK ENTRANCES

- Meets U.S. military requirements
- 3 Log purge time:
 - 3 minutes (Single Person Entrance - SPE)
 - 5 minutes (Multiple Person Entrance - MPE)
- FFA580-100-BTD (bump-through entrance doors) or FFA400-326R for MPE purge, available
- Integrates with all HDT CB shelter products
- Analog manual controls or digital automated controls (ACM)

AIRLOCK SPECIFICATIONS

	SPE	MPE1 Frame	MPE2 Liner
Physical characteristics			
L x W x H	29" x 35" x 84"	120" x 114" x 96"	120" x 114" x 96"
	73.7 x 88.9 x 213 cm	305 x 290 x 244 cm	305 x 290 x 244 cm
Weight	190 lbs / 86.2 kg	160 lbs / 72.6 kg	215 lbs / 97.5 kg
Purge time	2 minutes	9.5 minutes**	9.5 minutes**
Setup			
Time	10 minutes	10 minutes	
Personnel	1	2	

** 4.25 minutes with recirculation FFA400-326

NON-EXPORT CONTROLLED INFORMATION

CONTAMINATION CONTROL AREA (CCA)

- Convertible to 3 lanes for ambulatory decontamination
- Convertible to 2 lanes, ambulatory and non-ambulatory
- Interfaces with shelter airlock for smooth and safe transition into TFA while maintaining protection
- Water distribution (showers and hand wands), berm, berm floor and partitions included
- Based on HDT 305 and 307 ColPro Shelter (above). Other sizes to match complex upon request
- ECU and Filtration system for purging available (recommended)
- Water supply tank, pumps and combustion heater and collection available
- System can interface with customer water supply and collection
- Lighting and blackout equipment available

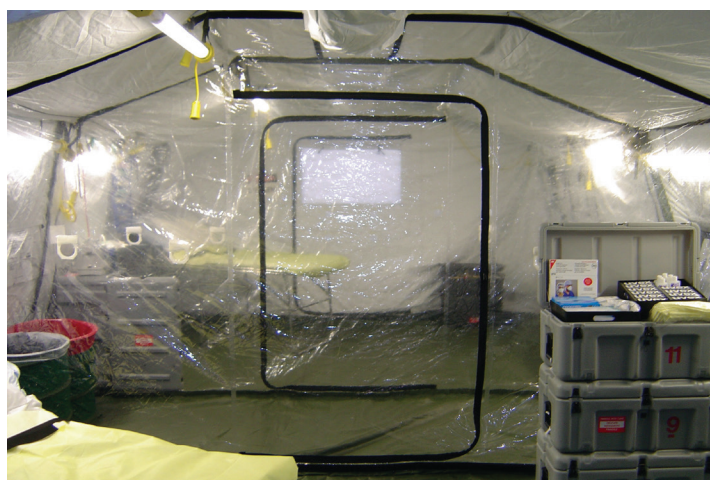
DECONTAMINATION SHELTER SYSTEMS

- User-friendly, advanced frame guarantees quick set up and superior strength
- Designed with wide lanes for rapid decon
- Water filled sidewall berm anchors shelter
- Modular design adapts to changing situations
- Completely integrated liner system includes containment berm, plumbing and lane dividers
- Folding frame technology makes set-up quick and easy



DECON SHELTER SPECIFICATIONS

Shelter	Individual 102	Two Lane 203	Three Lane 303	8 Foot Conveyor	17 Foot Conveyor
Interior dimensions					
Floor space	6' x 10'	11' x 15'	15' x 15'	8' x 2'	17' x 2'
Area	1.8 x 3.0 m	3.4 x 4.6 m	4.6 x 4.6 m	2.4 x 0.6 m	5.2 x 0.6 m
Area	60 ft ² / 5.6 m ²	165 ft ² / 15.6 m ²	225 ft ² / 21.2 m ²		
Set-up					
Time	3 to 4 minutes	5 to 8 minutes	5 to 8 minutes	1 minute	1 minute
Personnel	2	2	4	2	2
Accessories	Water heater, solution proportioner or solution eductor, sump pump kit, water pump, hoses, extension cords, water manifold kit, lighting, and air pump. Non-Ambulatory Systems include conveyor and transfer board.				



MEDICAL ISOLATION KIT

- 6-Bed, Rapid Deploying shelters with the most advanced negative pressure filtration technologies to prevent the spread of airborne infectious diseases
- Includes an ante-room area
- Free-standing, expeditionary, complete with power and cooling
- Medical equipment/supplies included can be tailored to meet your specific requirements
- Beds included with system

IASH II

- Remote thermostat for temperature control
- 200 VAC outlets for the HDT FFA-400 filtration system
- Compatible with 400 CFM CBRN filtration system



IASH II SPECIFICATIONS

Rating (variable)	100,000 – 200,000 BTU/H	29.8 – 58.6kW
Air flow	1900 CFM	53.8 m ³ /h
Fuel	DF1, DF2, DFA, and JP8	
Tank capacity	22 gallons	83.3 liters
Consumption	1.75 gallons per hour max	
Power	110 VAC, 60 Hz, 15 Amp	
Physical characteristics		
L x W x H	58" x 23" x 28"	147.3 x 58.4 x 71.1 cm
Weight (dry weight)	272 lbs	123.4 kg
Accessories		
Included	Remote thermostat and CO detector, stack adapter, two 16" x 10' (40.64 cm x 3 m) ducts, power cord	
Available	Insulated ducts, ColPro collars and ducts	

HDT Expeditionary Systems, Inc.

30500 Aurora Road, Suite 100, Solon, OH 44139 USA
P 800.969.8527 / 216.HDT.6111 / sales@hdtglobal.com

NON-EXPORT CONTROLLED INFORMATION
Revision 12 01-24 01-07-01-0064