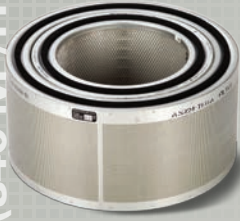


Filters

200 CFM (340 M³/H)



M98

Type: Gas and particulate
 Housing Material: Stainless Steel/ Aluminum
 Dimensions (L x D): 10.19" x 21.43"
 (25.89 x 54.4 cm)
 Weight: † 43.25 lbs (19.6 kg)
 NSN 4240-01-369-6533

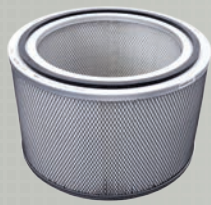
200 CFM (340 M³/H)



M98 Carbon Gas Filter

Type: Gas
 Housing Material: Aluminum
 Dimensions (L x D): 10.19" x 21.43"
 (25.89 x 54.4 cm)
 Weight: † 35.5 lbs (16.14 kg)
 NSN 4240-01-550-5226

200 CFM (340 M³/H)



M98 HEPA Particulate Filter

Type: Particulate
 Housing Material: Stainless Steel/ Aluminum
 Dimensions (L x D): 10.16" x 16.6"
 (25.81 x 40.6 cm)
 Weight: 7.75 lbs (3.52 kg)
 Part Number 106722

200 CFM (340 M³/H)



OpenAire™ HEPA Filter

Type: Particulate filter
 Housing Material: Aluminum end caps with expanded galvanized steel liners
 Dimensions (L x D): 10.19" x 21.39"
 (25.88 x 54.33 cm)
 Weight: 15.4 lbs (7 kg)
 NSN: 4130-01-600-9317

Rule of Thumb CBRN System Usage

AFU	Airflow	Max People US (NATO)	Filters Used	Vehicle	Hard Wall Shelter	Soft Wall Shelter	Small Boat	Ship	Fixed site
M2A2 (M8A3, M14)	12 CFM (20 m ³ /h)	4 (4)	M12A2, M13		1	1	1	1	1
M1A1-19 (M13A1)	20 CFM (34 m ³ /h)	5 (5)	M19***		1	1	1	1	1
M93	100 CFM (170 m ³ /h)	4 (8)	M48A1	2			2	7	
FFA100-124	100 CFM (170 m ³ /h)	4 (8)	M48A1		3			7	3
FFA100-224	100 CFM (170 m ³ /h)	4 (8)	M48A1		3			7	3
FFA400-326	400 CFM (680 m ³ /h)	20 (40)	2x M98		4, 5		4, 5	5, 7	4
FFA400-426	400 CFM (680 m ³ /h)	20 (40)	2x M98	4			4	7	
CBPS	400 CFM (680 m ³ /h)	20 (40)	2x M98	4			4	7	
M59	400 CFM (680 m ³ /h)	20 (40)	2x M98	4					
FFA580-100	600 CFM (1020 m ³ /h)	30 (60)	3x M98			6	4	7	
FFA1000-100	1000 CFM (1700 m ³ /h)	50 (100)	5x M98		4, 6			7	
FFA1000-200	1000 CFM (1700 m ³ /h)	50 (100)	5x M98					7	
MCRF	600 CFM** (1020 m ³ /h)	30** (60)	M98 as needed					7	
OpenAire®	600 CFM** (1020 m ³ /h)	30** (60)	M98 as needed					7	
Navy Housings	600 CFM** (1020 m ³ /h)	30** (60)	M98 as needed						
AirePod™ System	30,000 CFM* (51,000 m ³ /h)		M98 as needed						

* Up to 30,000 CFM ** Minimum *** 2x M18A1 externally mounted

- Tethered system requiring use of a mask. Could be used as a backup to a positive pressure unit.
- Requires 120 VAC
- Requires 28 VDC
- Requires 208 VAC, 3 Phase
- Man-portable unit with a carry frame
- Not-man-portable
- Not tested to Navy shock and vibe

 Strong Compatibility
 Partial Compatibility
 Not Compatible

HDT Global
 www.hdtglobal.com

30500 Aurora Road, Suite 100 • Solon, OH 44139 • 800.969.8527

CBRN QUICK REFERENCE GUIDE

The prevailing force in the field.



Filters

12 CFM (20 M³/H)



M12A2

Type: Gas filter
 Housing Material: Steel
 Dimensions (L x W x H): 3" x 5.43" x 6.92"
 (7.62 x 13.8 x 17.6 cm)
 Weight: † 3.2 lbs (1.45 kg)
 NSN 4240-01-365-0981

12 CFM (20.4 M³/H)



M13

Type: Particulate filter
 Housing Material: Steel
 Dimensions (L x W x H): 1.9" x 5.42" x 6.93"
 (4.826 x 13.8 x 17.6 cm)
 Weight: 1.16 lbs (0.53 kg)
 NSN 4240-00-368-6291

20 CFM (34 M³/H)



M19

Type: Particulate filter
 Housing Material: Steel
 Dimensions (L x W x H): 3.75" x 5.42" x 6.93"
 (9.5 x 13.8 x 17.6 cm)
 Weight: 2 lbs (0.9 kg)
 NSN 4240-00-866-1825

10 CFM (17 M³/H)



M18A1

Type: Gas filter
 Housing Material: Steel
 Dimensions (L x D): 9.5" x 5"
 (24 x 12.7 cm)
 Weight:† 3.75 lbs (1.7 kg)
 NSN: 4240-01-365-0982

† Weight may vary slightly due to carbon density and certain other factors.

Mobile Systems

12 CFM (20.4 M³/H)



M2A2 (M8A3, M14)

Power:
27.5 VAC/24 VDC, 5 Amp
Dimensions (L x W x H):
13" x 6" x 7.5"
(33 x 15.2 x 19.1 cm)
Weight:
20.25 lbs
(9.2 kg)
NSN:
4240-00-868-7906 (Air Purifier),
4240-00-853-3201 (System)

20 CFM (34 M³/H)



M1A1-19 (M13A1)

Power:
24 VAC/27.4 VDC, 5 Amp
Dimensions (L x W x H):
13" x 6" x 7.5"
(33 x 15.2 x 19.1 cm)
Weight:
15.75 lbs
(7.16 kg)
NSN:
4240-01-026-3112 (Precleaner),
4240-00-964-9061 (System)

100 CFM (170 M³/H)



M93

Power:
120 VAC
Dimensions (L x W x H):
13.5" x 13.5" x 27.81"
(34.3 x 34.3 x 70.6 cm)
Weight:
61 lbs
(27.66 kg)
NSN:
4240-01-231-6515

100 CFM (170 M³/H)



FFA100-124

Power:
19 – 32 VDC, 22 Amp
Dimensions (L x W x H):
24.39" x 14.5" x 14.97"
(62 x 36.8 x 38 cm)
Weight:
65 lbs
(29.5 kg)
NSN: N/A

100 CFM (170 M³/H)



FFA100-224

Power:
19 – 32 VDC, 22 Amp
Dimensions (L x W x H):
24.69" x 14.5" x 14.97"
(62.7 x 36.8 x 38 cm)
Weight:
65 lbs
(29.5 kg)
NSN:
N/A

400 CFM (680 M³/H)



FFA400-426

Power:
190 – 240 VAC,
1 or 3 Phase
Dimensions (L x W x H):
31.22" x 26.75" x 26.25"
(79.3 x 68 x 66.7 cm)
Weight:
~100 lbs
(~45 kg)
Part Number:
FFA400-426

Transportable Systems

400 CFM (680 M³/H)



FFA400-326

Power:
190 – 240 VAC,
1 or 3 Phase
Dimensions (L x W x H):
37" x 31" x 30"
(94 x 79 x 76 cm)
Weight:
190 lbs
(86 kg)
NSN:
4230-01-579-1957

600 CFM (1020 M³/H)



FFA580-100

Power:
190 – 230 VAC,
8.8 – 7.2 Amp
Dimensions (L x W x H):
62" x 37.36" x 28.37"
(157.4 x 94.9 x 72 cm)
Weight:
300 lbs
(136 kg)
NSN:
4240-01-101-3611

Fixed Site Systems

1000 CFM (1700 M³/H)



FFA1000-100

Power:
208 – 230 VAC,
9.7 – 8.9 Amp
Dimensions (L x W x H):
31.22" x 26.25" x 26.25"
(79.3 x 66.7 x 66.7 cm)
Weight:
330 lbs
(150 kg)
NSN:
4230-01-485-6185

1000 CFM (1700 M³/H)



FFA1000-200

Power:
Dependent on customer configuration
Dimensions (L x W x H):
58.85" x 26.76" x 26.97"
(149.5 x 68 x 68.5 cm)
Weight:
<100 lbs
(<45.4 kg)
NSN:
4230-01-485-6183

100 CFM (170 M³/H)



OpenAire™ Housing

NSN:
1 Filter: 62-NW000296-01
2 Filter: 62-NW000296-02
3 Filter: 62-NW000296-03
4 Filter: 62-NW000296-04
5 Filter: 62-NW000296-05
6 Filter: 62-NW000296-06
7 Filter: 62-NW000296-07
8 Filter: 62-NW000296-08

100 CFM (170 M³/H)



Navy Housings

Part Number:
1 Filter: 62-6573690-01
2 Filter: 62-6573690-02
3 Filter: 62-6573690-03
4 Filter: 62-6573690-04
5 Filter: 62-6573690-05

30,000 CFM (5100 M³/H)



AirePod™ System

Power:
208/230/460VAC for Fans
120VAC for Instruments
Dimensions (L x W x H):
Dependent on customer configuration
Weight:
Dependent on customer configuration
Part Number:
62-NW001407

Filters

100 CFM (170 M³/H)



M48A1

Type:
Gas and particulate
Housing Material:
Aluminum
Dimensions (L x D):
14.5" x 11.88"
(36.9 x 30.2 cm)
Weight: †
28.5 lbs (12.1 kg)
NSN:
4240-01-363-1311

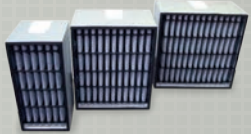
>600 CFM (1020 M³/H)



Bag Prefilter

Type:
Prefilter
Housing Material:
100% Polyester Shaker Felt
Dimensions (L x D):
Fits OpenAire and Navy Filter Housings
Part Number:
3 Filter: 62-NW000107-04
5 Filter: 62-NW000107-06

>875 CFM (>1488 M³/H)



Chem-X® Pleated Filter

Type:
Gas filter
**875 CFM/
1500 CFM/
1800 CFM**
Dimensions (L x W x H):
12" x 24" x 12/
20" x 24" x 12/
24" x 24" x 12"
(30.5 x 61 x 30.5 cm/
51 x 61 x 30.5 cm/
61 x 61 x 30.5 cm)
Part Number:
CHEM-X-A01-122412/
CHEM-X-A01-202412/
CHEM-X-A01-242412

† Weight may vary slightly due to carbon density and certain other factors.