

The Pressure Indicator is designed for use in ships, buildings, and other applications where reliable air pressure measurements are required. The Indicator is available in three pressure ranges: 0.0-4.0, 0.0-10.0, and 0-0.5 inches of water gauge (in. wg) for measuring overpressure within collective protection zones and filter flow restrictions. When remote signaling is required, use the Pressure Indicator Transmitter (NW001031).

Product Description

The Pressure Indicator is a practical device specifically designed for collective protection applications where reliable pressure measurements are needed. The Pressure Indicator features a Magnehelic® gauge that measures and displays differential pressure between low and high pressure signal inputs.

Three measurement ranges are available. Part number NW001032-04 features a 0.0 – 4.0 in. wg full scale reading for measuring overpressure in ship collective protection zones. The gauge has red, yellow, and green ranges corresponding to the casualty (0.0 – 0.5 in. wg), deficiency (0.5 – 1.5 in. wg) and normal (1.5 – 2.5 in. wg) operating scenarios.

Part number NW001032-10 features a 0 – 10.0 in. wg full scale reading for measuring the pressure drop imparted by a CBR filter set. The gauge face contains no color markings.

Part number NW001032-50 features a 0 – 0.5 in. wg full scale reading for measuring the pressure drop imparted by a ventilation prefilter. The gauge has yellow, green, and red ranges corresponding to the low (0.0 – 0.1 in. wg), acceptable (0.10 – 0.35 in. wg), and high (0.35 – 0.50 in. wg) flow restrictions.

The pressure gauge is mounted in a lightweight, corrosion-resistant bracket. Optional snubbers are recommended for dampening the pressure signals and providing more stable gauge readings with less needle fluctuation.

Operator Interface

Display	
Color Markings	NW001032-04 – Red: 0 – 0.5 in. wg, Yellow: 0.5 – 1.5 in. wg, Green: 1.5 – 2.5 in. wg

Physical Characteristics & Options

Size	9.0" high × 8.0" wide × 2.5" deep, nominal
Weight	5.0 lb, nominal
Panel Material	Aluminum
Panel Coating	Iridited IAW MIL-C-5541, Class 3
Color	Cloud Gray (Color 26307) or Light Gray (Color 16307) IAW FED-STD-595
Fittings	Swagelok® Male Bulkhead Connectors for 3/8" (10mm) O.D. Tubing Pressure Snubbers (optional)

Performance

Pressure Ranges	0.0 to 4.0 in. wg operating (NW001032-04)
	0.0 to 10.0 in. wg operating (NW001032-10)
	0.0 to 0.5 in. wg operating (NW001032-50)
Pressure Resolution	0.1 in. wg (NW001032-04)
	0.2 in. wg (NW001032-10)
	0.01 in. wg (NW001032-50)
Gauge Accuracy	±2% on NW001032-04, ±2% on NW001032-10, ±3% on NW001032-50

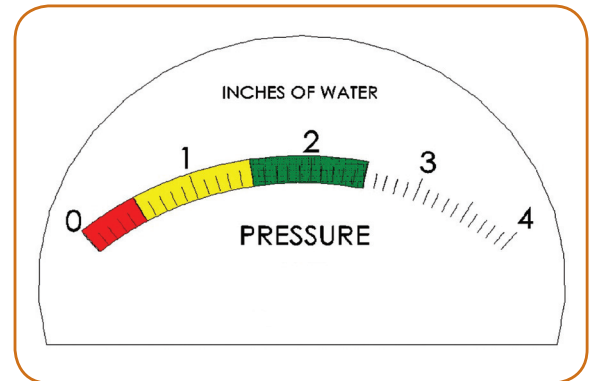
Electrical Characteristics

Input	10-35 VDC (2-wire)
Output Signal	4-20mA, proportional

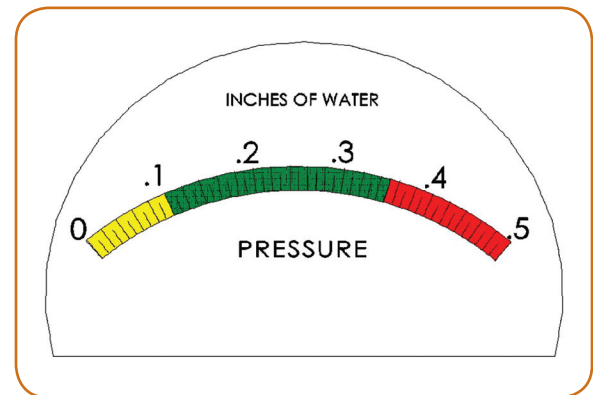
The information in this product data sheet is believed to be correct at the time of publishing. It is subject to change without notice. Please confirm prior to using any data for design purposes.

HDT Engineering Services, Inc.
415 Wolfe Street
Fredericksburg, VA 22401
P. 540.373.1435
F. 540.371.5069

www.hdtglobal.com



NW001031-10 - Yellow: 0.0 – 5.0 in. wg, Green: 5.0 – 8.0 in. wg, Red: 8.0 – 10.0 in. wg



Auxiliary System Components

Item No.	Component	Part No.
1	Static Outside Air Probe (SOAP)	6573341
2	Air Line Filter	6573296
3	Snubber	6573291

